

# SABER® Professional Synthetic 2-Stroke Oil

## One Oil Covers All Mix Ratios

SABER Professional eliminates the problems that plague handheld two-stroke equipment using other oils, including hard starting, rough running, power loss and shortened service life. We tested SABER Professional at a 100:1 mix ratio compared to other two-stroke oils at 50:1, and the results are clear: SABER Professional dominated the competition in every area of performance. Even when using half as much oil, SABER Professional does a better job fighting carbon deposits that rob engines of power and reduce their service life. It helps landscapers, contractors and other professionals work more efficiently and cut costs.

### Improves Engine Operation & Life

SABER Professional's high-quality synthetic base oils burn more cleanly than other synthetic and conventional base oils. It eliminates carbon deposits that lead to stuck piston rings, clogged exhaust ports and plugged spark arrestor screens. Following 300 hours of professional-use testing in ECHO\* string trimmers, SABER Professional mixed at 100:1 resisted carbon better than ECHO Power Blend\* XTended Life\* Universal 2-Stroke Oil mixed at 50:1 (see images). For complete test results, see the ECHO 100:1 String Trimmer Technical Study (G3470).

### Cuts Oil Costs

Mixing SABER Professional at 100:1 cuts oil costs by 50 percent or more while still providing unmatched protection and performance. It allows professionals the best of both worlds – reduced costs and increased protection.

### Smokeless Operation

SABER Professional passes the industry-standard smoke test at the standard rich mix ratio. When mixed at the SABER Ratio, smoke is virtually undetectable. Equipment operators subjected to smoke and fumes benefit from these low-emission properties.



- **Excellent** lubricity and cleanliness
- **Controls** friction and helps prevent wear, plug fouling, ring sticking and exhaust port blocking
- **Smokeless** – delivers fewer emissions at 100:1
- **Stabilizes** fuel during storage
- **Delivers** outstanding protection and performance at lean mix ratios

### Cleaner Pistons



SABER Professional @ 100:1

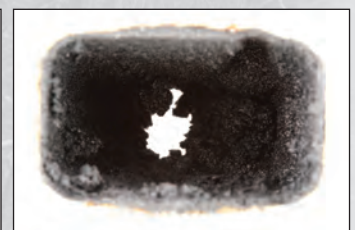


ECHO Power Blend @ 50:1

### Reduced Power-Robbing Carbon (Exhaust Ports)



SABER Professional @ 100:1  
4% Airflow Loss



ECHO Power Blend @ 50:1  
76% Airflow Loss

## TYPICAL TECHNICAL PROPERTIES

### SABER® Professional Synthetic 2-Stroke Oil (ATP)

Kinematic Viscosity @ 100°C, cSt (ASTM D445)	14.0
Kinematic Viscosity @ 40°C, cSt (ASTM D445)	107.4
Viscosity Index (ASTM D2270)	132
Pour Point, °C (°F) (ASTM D97)	-40 (-40)
Flash Point, °C (°F) (ASTM D92)	180 (356)
Fire Point, °C (°F) (ASTM D92)	240 (464)

### Fuel Stabilization

SABER Professional provides the additional benefit of fuel stabilization to help prevent fuel from deteriorating during storage and causing poor engine performance. There is no need to add an additional fuel stabilizer when putting equipment into seasonal storage.

### APPLICATIONS

Use in all two-stroke handheld equipment where JASO FD, ISO-L-EGD or API-TC oils are specified, including STIHL,\* Husqvarna,\* ECHO,\* Toro,\* Shindaiwa,\* Craftsman,\* 4-mix STIHL and Hybrid 4 Shindaiwa engines.

Use at conventional mix ratios or the SABER Ratio,<sup>™</sup> regardless of the mix ratio specified for the equipment. For maximum benefit, use the SABER Ratio.

### WARRANTY SECURE®

AMSOIL SABER Professional Synthetic 2-Stroke Oil is Warranty Secure, keeping your factory warranty intact. SABER Professional is a high-performance replacement for equipment manufacturer-branded products and is also backed by the AMSOIL Limited Warranty. For details, visit [AMSOIL.com/warrantysecure](http://AMSOIL.com/warrantysecure).



### HEALTH AND SAFETY

This product is not expected to cause health concerns when used for the intended applications and according to the recommendations in the Safety Data Sheet (SDS). An SDS is available online at [AMSOIL.com](http://AMSOIL.com) or upon request at (715) 392-7101. **Keep Out of Reach of Children.**

MIX	RATIO	OIL	FUEL
Conventional	32:1	4.0 oz.	1 U.S. GAL
Conventional	40:1	3.2 oz.	1 U.S. GAL
Conventional	50:1	2.6 oz.	1 U.S. GAL
Conventional	80:1	1.6 oz.	1 U.S. GAL
<b>SABER® Ratio<sup>™</sup></b>	<b>100:1</b>	<b>1.3 oz.</b>	<b>1 U.S. GAL</b>
METRIC			
Conventional	32:1	125 mL	4 Litres
Conventional	40:1	100 mL	4 Litres
Conventional	50:1	80 mL	4 Litres
Conventional	80:1	50 mL	4 Litres
<b>SABER® Ratio<sup>™</sup></b>	<b>100:1</b>	<b>40 mL</b>	<b>4 Litres</b>

\*All trademarked names and images are the property of their respective owners and may be registered marks in some countries. No affiliation or endorsement claim, express or implied, is made by their use.



AMSOIL products and Dealership information are available from your local full-service AMSOIL Dealer.